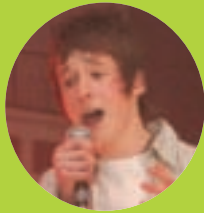


artworks



Inside... Interview with Doug Eyre,
The W Factor final, plus much more!

Spring 2008

 **WYCHAVON**
DISTRICT COUNCIL
good services, good value



Hi, welcome to the Spring edition of Artworks. There are loads of exciting and new developments in Wychavon's arts scene, it's been a really busy time. Highlights include 'The W Factor', Wychavon's young people's talent contest and 'Evesham Arts 4 All' a showcase event for local artists and groups. Also of course the opening of the new space here, at The Civic Centre for local artists to display their work. Once again, please get in touch if you need help, advice or have an idea for a project.

Jenny Davis
01386 565396
jenny.davis@wychavon.gov.uk

aims for wychavon arts...

more people seeing and participating in visual and the performing arts, especially in rural areas

more people creating exciting new work which is of a high quality

more people aware of arts activity happening in your area and it's benefits

more arts activity happening, through working together

arts development in wychavon...



Written by:
Jenny Davis
Designed by:
Helen Keegan
Wychavon District Council
Published by:
Wychavon District Council
Printed on recycled paper

Youth music

Another term and yet another productive set of sessions in the Wychavon Youth Music Programme. The bands and solo artists involved across the region have not only increased their awareness of song writing and performance presentation but have also been involved in a number of gigs both in and outside of their local 'comfort zones' and respective home towns. The Cavern (legendary Beatles regular venue) in Liverpool, The Academy (regular touring stop for signed bands) in Birmingham, The Bullet Bar in London and a host of other venues throughout Camden and the Capital have all played host to some of the bands and solo artists who take part in the Youth Music Programme.

Attendee Becky Davies from Pershore High School will return to the final of this years in house vocal competition this time as reigning winner where she will perform one of the songs which gained her the title in 2007 and an original composition both of which have been honed during the sessions. Also taking

part in the final and also from Pershore High is the newly recruited Elizabeth Crawford who in her own right is an award winning choral soloist having been awarded chorister of the year for 2007.

The emphasis for so many of the bands this term has been promotion, promotion promotion! As their musical talents improved there is a constant desire for more people to hear it so help with marketing campaigns and general everyday tools for getting the music 'out there' has been really positive.

Ade Holbrook



Focus on... visual arts

Droitwich and Evesham Banner Art



Wychavon District Council recently received some funding from Advantage West Midlands to create some art work with the local community to help promote the flooded shops in Evesham and Droitwich.

The Banner Art Project has



proved to be a success with the shop owners and participants. The designs for the banners were created by young people from local schools, (Blackminster Middle, St Josephe's Primary, Dodderhill and Ombersley First Schools) and Droitwich Art Group with the help of professional artists, Worcester Arts Workshop and Nicky DuPays. The brightly coloured banners were designed to advertise the re-opening of the shops and to add colour to the ones in the process of re-opening. This is also a great example of how art can work alongside economic development

WANA (Wychavon Area network for Artists) are inviting all visual artists in the area to come and join in with an exciting new visual arts festival planned for August 2008. Artists both amateur and professional based across Wychavon will open their studios, hold exhibitions and run workshops, to promote their work and themselves.

WANA would like you to take advantage of their network to open yourself up to new contacts, marketing yourself within a recognized organisation and simply having fun.

The deadline for inclusion in events is 1st May 2008. For more information visit www.wana.org.uk or call 01386 550016 or e-mail info@wana.org.uk



Pilot gallery paintings

The Showell foyer space is now being used as a pilot gallery space for one year. This is to promote local artists work both amateur and professional. The first year has been programmed and it opens with a series of caricatures from Doug Eyre, then Pershore artist, Paul Bordiss with his 'Farming the Vale' collection, following this Evesham Camera Club and then Sarah Jacks paintings of local coffee shops in Pershore.

The pictures are for sale, but please contact the artist directly. Please feel free to come and have a look.





Doug Eyre interview

What is your name and role?

Doug Eyre, I am a local practicing artist living in Broadway

What is your background?

Graphic design, much of my early career was connected with graphics for Formula One motor racing and other forms of motor sport. There is still a strong connection between harmony of line and colour used in this work and my current artwork. This thread of line, form and colour underpins all the work I produce: my paintings, designs and live caricature art.

What do you love?

Life, observing people and situations, the humour in everyday life. Like many artists I enjoy music both making it and listening to it. I can be quite creative in this way too. I have just published my first book on the fundamentals of Caricature Art.

What are your hobbies?

Writing my next book on the history of graphic art in Motor sport.

What is your favourite food?

Steak and Kidney pie

What is your favourite book?

There are so many that I have enjoyed and dip into for reference. 'The Story of Art' and any book on the Life and works of Leonardo Da Vinci are favourites but for true relaxation a good sailing yarn wins hands down.

What is your favourite Music?

All sorts, some jazz, popular and folk music, classical music Smetina in particular

Who is your Idol?

I have been influenced by many people in my lifetime, when I worked on the cars Jackie Stewart impressed me as a brilliant driver and tactician, Spy and Ralph Sallon influenced my caricature style.

How can you make a difference?

I hope my work brings pleasure to a lot of people introducing both humour and design.

Contact

deyre@dsl.pipex.com

www.dougeyre.com

Tel. 07732 413044

Youth arts



Guy Border

Hayden Godbold



Jake Walker



Elizabeth Moseley

THE W FACTOR

There was some exceptional talent witnessed at 'The W Factor' auditions held in January and February 2008 in Wychavon. The W Factor is a performing arts talent contest for 11-18 year olds. The judges saw 67 acts of dancing, singing, poetry, musical talent, comedy and circus. It was a hard decision for the judges to decide the final seventeen

acts, that would go through to the final show that was held on 28th February at Evesham Public Hall. Over 130 of the finalists friends and family and local councillors were there for the show, which was a great success. The winners were Hayden Godbold for Singing, Elizabeth Moseley for Dancing, Guy Border singing and Instrumentalist and Jake Walker for Alternative Arts. The winners will receive some further training and may get the opportunity to perform at one of Wychavon District Councils summer events 08 so look out for them

Party in the Park 2008

'Party in the Park' traditionally a music and sports event is trying to encourage other art forms to be represented and for local youth arts groups to get involved.

If you are currently working on a project that you think would be suitable for the festival, then we would like to hear about it. These projects could be related to any kind of visual or performance art, including collage, photography, acting sculpture, music, poetry, singing, and dance.

Dates

Pershore Abbey Park

Monday 18 August

Droitwich Spa High School Field

Tuesday 19 August

Evesham, Abbey Park

Wednesday 20 & 21 August

If you would like to get involved in the event call 01386 565168

tracy.grubb@wychavon.gov.uk

Youth arts after school clubs

Local schools and youth clubs have been getting 'arty' with drama, dance, singing, video and pottery workshops. Wychavon District Council has been funding professional artists to go in to after school clubs and youth club nights, to give young people a 'taste' of arts that they would not normally get. The interest and enthusiasm of the young people has been immense, showing that young people are still hungry for arts activities.



Evesham ARTS 4 all

Wychavon District Council & Evesham Arts Association held an arts & entertainments open day on Sunday 9th March at Evesham Arts Centre. Evesham Arts 4 All offered local people the chance to sample all kinds of activities by local arts groups & businesses and offered something to interest just about everyone.

Evesham Arts Centre was filled to the brim with short performances, activities and demonstrations showcasing local groups, individuals & classes such as workshops on creative writing, pottery, theatre lighting/sound and several on drama (for all ages from 5 upwards), backstage theatre tours, demonstrations of flower-arranging

and displays of paintings & photography, performances & exhibitions of jazz & gospel singing, short plays, Barbershop harmony, clog dance, music from the 15th to 19th centuries, Irish dance, and poetry.

"The Evesham area has a lot of artistic activity going on but people don't always know what's available in their area. We thought it would be a good to put on an event where the public could come along & get a taste of what was on offer." - Jenny Davis, Wychavon District Council Arts Development officer.

"The number and variety of people that took part was great. We had difficulty fitting them all in." - Chris Bloomfield, Arts Centre bookings officer.

"At last an opportunity to see our own local talent together at one venue." - Mary Felton, Irish dance teacher.

If you want to get involved in similar events and are a local artist or arts group then call Jenny Davis 01386 565396 or e-mail jenny.davis@wychavon.gov.uk



*Lady
Georgianna*

Wychavon Community Grants Scheme



£200,000 up for grabs by voluntary and Charitable groups. This years grants theme is the arts, but this does not exclude

applications from other aspects of community life, such as community buildings, sports, play - in fact any project that benefits the community. Wychavon has a vibrant Arts scene with an array of activities and disciplines, from our small village based groups involved in anything from amateur dramatics to barber shop quartet group singing and to our established arts venues, such as

Pershore's Number 8 Community Arts Centre.

Projects could include;

- the purchase of equipment to allow more people to get involved in a group's activities
- put on exhibitions of a group's activities to widen interest and encourage membership
- buy in a 'professional' artist for a workshop to improve knowledge and techniques

For more information and an application pack contact Felicia Leo on 01386 565183 or visit www.wychavon.gov.uk

Awards for all

Awards For All is a Lottery grants scheme aimed at local communities. They award grants of between £500 and £10,000 in a simple and straightforward way. They can fund projects that enable people to take part in art, sport, heritage and community activities, as well as projects that promote education, the environment and health in the local community.

For an application pack please phone: 0845 600 2040 or visit www.awardsforall.org.uk



First Base grants

Worcestershire County Council 'first base' grants (up to £500)

First Base is being relaunched in line with a new WCC grants system. There will only be one application deadline each year. In 2008 the First Base deadline will be at the end of April with grants being awarded by the end of June.

Applications will be available on the County Council's website from mid-March 2008. If you would like more information on the arts grants or to request an application pack please contact the County Arts Service on 01905 767337 or email artsenquiries@worcestershire.gov.uk.



Local news...

The Norbury Theatre

THE NORBURY THEATRE

The Norbury Theatre has currently secured its future in the Droitwich community for the next twenty-five years for a lease with a new landlord, which promises exciting times for them with building redevelopment and a greater role in the Droitwich community as a whole. They are currently working with Architects to redevelop the front of their building and Wychavon District Council regarding using part of their cellar as a "drop in" centre for local young people among many other potentially very exciting projects.

They will be holding a Gala Evening at the Theatre to celebrate the wonderful community that Droitwich is and to raise money for this year's Mayor's Charities. The aim of the evening is to showcase the wonderful talent that Droitwich has, both inside and outside of the Theatre, and also to share memories of Droitwich through the years and the experiences of the floods last year.

They are putting together a programme for this event which will take place at the Theatre on Saturday 5 April 2008 and are looking for people to perform on the night.

For more information contact Alan Humphries on 07971220671
bluenose2007@btinternet.com

Number 8 Community Arts Centre



Films Coming Soon to Number 8

The Other Boleyn Girl - Friday 4th, Saturday 5th, Monday 7th, Tuesday 8th & Thursday 10th April

The Kite Runner (12A)

Friday 18th, Monday 21st, Tuesday 22nd, Thursday 24th April

Public Booking will open on Thursday 27th March - 01386 555488 so put the dates in your diary NOW!

Evesham Arts Centre



Events coming up at Evesham Arts Centre include...

Worcestershire Drama Festival, Come & see local performers compete to stage the best show - drama, dance, music, whatever! Avonbank Brass Band Spring Concert and stand up comedians. Also if you want to exhibit in the foyer of the art centre gallery then get in touch www.eveshamartscentre.co.uk or tel 01386 442348 for tickets.

Worcestershire County Museum

Worcestershire
County Museum is



housed in the servants quarters of Hartlebury Castle, home to the Bishop of Worcester since the 16th century. The County Museum main galleries include collections ranging from children's toys, archaeology and costume to craft work by the Bromsgrove Guild. The Worcestershire Guild of Designer Craftsmen also have a permanent display and sales area in the museum shop. Their unique craft work includes jewellery, homeware, clothing and decorative pieces using wood, metal, glass, ceramics and textiles.

For the next few months the In Focus themes will be:

February & March - Glass

April & May - Textiles

June & July - Wood

2008 opening times 1st Feb - 24th Dec

10am - 5pm Tuesday to Friday and

11am - 5pm, Weekends & Bank Holidays

Tel 01299 250416

Worcestershire Resource Exchange

Worcestershire Resource Exchange is a "Scrapstore" - the place to go for a wide range of materials for all your creative work. They take non-hazardous scrap free from businesses, so reducing landfill. There is paper, felt, shiny film,

foam, fabric, tubing and much much more! They have Arts training workshops and an arts and crafts shop! for further information Tel 01905 726796 or visit

www.wre.uk.com



Opening hours

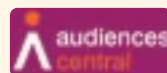
Thursday: 12pm - 7pm

Friday: 10am - 5pm

Saturday: 10am - 1pm

The Big Picture

Audiences Central would like to invite your organisation to be part of The Big Picture.



The focus of The Big Picture

www.audiencescentral.co.uk is photography, but you don't have to be a visual arts organisation or have a venue to get involved. For example, you could encourage people to take pictures at your events, behind the scenes or during the interval of a show, which they could then submit to The Big Picture www.audiencescentral.co.uk

You may want to invite new audiences into your organisation by holding a series of creative photography based workshops. There is a nominal participation charge for collaborating venues and. You can plan activities between February and June 2008. To register your interest, or to find out more, please telephone Johnathan Branson on 0121 6852620 or email johnathan.branson@audiencescentral.co.uk

Arts Marketing...

Worcestershire Arts Marketing (WAM) was established by the County Council in partnership with the Arts Council, District Councils and Worcestershire Arts Forum (WAF). WAM exists to spread the word about the thriving arts scene in the county and to enable arts organisations and individuals to develop and improve their own marketing skills. It provides practical and strategic arts marketing services to anyone working in the arts and cultural sector in the county of Worcestershire.

The core services provided are:

Professional development

WAM, in association with WAF offers training and networking opportunities on an informal basis. WAM also has access to other training opportunities offered to the arts industry at all levels and has a library of data and research intelligence available about the county and potential arts audiences. WAM works with the regional audience development agency, Audiences Central on strategic regional marketing initiatives.

Print distribution

Worcestershire Arts Marketing operates a reliable and efficient bespoke distribution service, delivering printed material to a network of outlets across the County. Racks are prominently sited in public buildings including colleges, tourist information centres, arts venues and community centres, and hospitals. The service operates fortnightly and represents great value for money. For full details about the distribution service, a list of outlets and booking forms, contact the Arts Service on 01905 766337 or artsenquiries@worcestershire.gov.uk

Wychavon's rural touring programme

There are now fifteen local Wychavon promoters and the numbers are growing. If you haven't been to a shindig show before, then do go, as you will only want to come back for more! There is something for everybody from dance to music to drama to Children's theatre and International acts. Highlights this season include an Italian jazz Quartet 'Spaghetti Swing', Bayou Seco' from New Mexico and 'Umdumo Weziswe' from Zimbabwe. The summer season is now available to view on www.wychavon.gov.uk or www.shindig.org.uk



Get in touch...

If you have something to say about the arts in Wychavon or anything in this newsletter or you need some advice, then please do get in touch.

Also, if you are a new arts group or you work within the arts then we want to know about you. Tel 01386 565396 or e-mail jenny.davis@wychavon.gov.uk

