

Wychavon District Council Organisational Structure – March 2020

Please note:

- **FTEs shown are Current FTE hours actually worked (not budgeted FTE)**
- **Wychavon District Council Established posts as shown in grey**
- **Shared posts on Malvern Hills District Councils establishment are shown in white**

Senior Management Team

***Link for description of Senior roles**

*** Link to Senior Salaries in Statement of Accounts**

*** Link to Senior Salaries in Pay Policy Statement**

Managing Director*

FTE 1.0

MD Grade (max £132,663 – see note)

Permanent Contract

**Salary Band;
£125,234 - £135,316**

jack.hegarty@wychavon.gov.uk

Note Joint Head of Paid Service with Malvern Hills DC
wef 1 Dec 2014

Deputy Managing Director

FTE 1.0

Pay Grade SMT2 (max
£86,139)

Permanent Contract

**Salary Band £79,556-
£86,139**

Post Salary Max £89,999

Director of Economy and Environment **

FTE 1.0

Pay Grade SMT2 (max
£86,139)

Permanent Contract

**Salary Band £80,000 -
£84,999**

Director of Planning and Infrastructure**

FTE 1.0

Pay Grade SMT2(max
£86,139)

Permanent Contract

**Salary Band £75,000 -
£79,999**

Director of Housing & Communities**

FTE 1.00

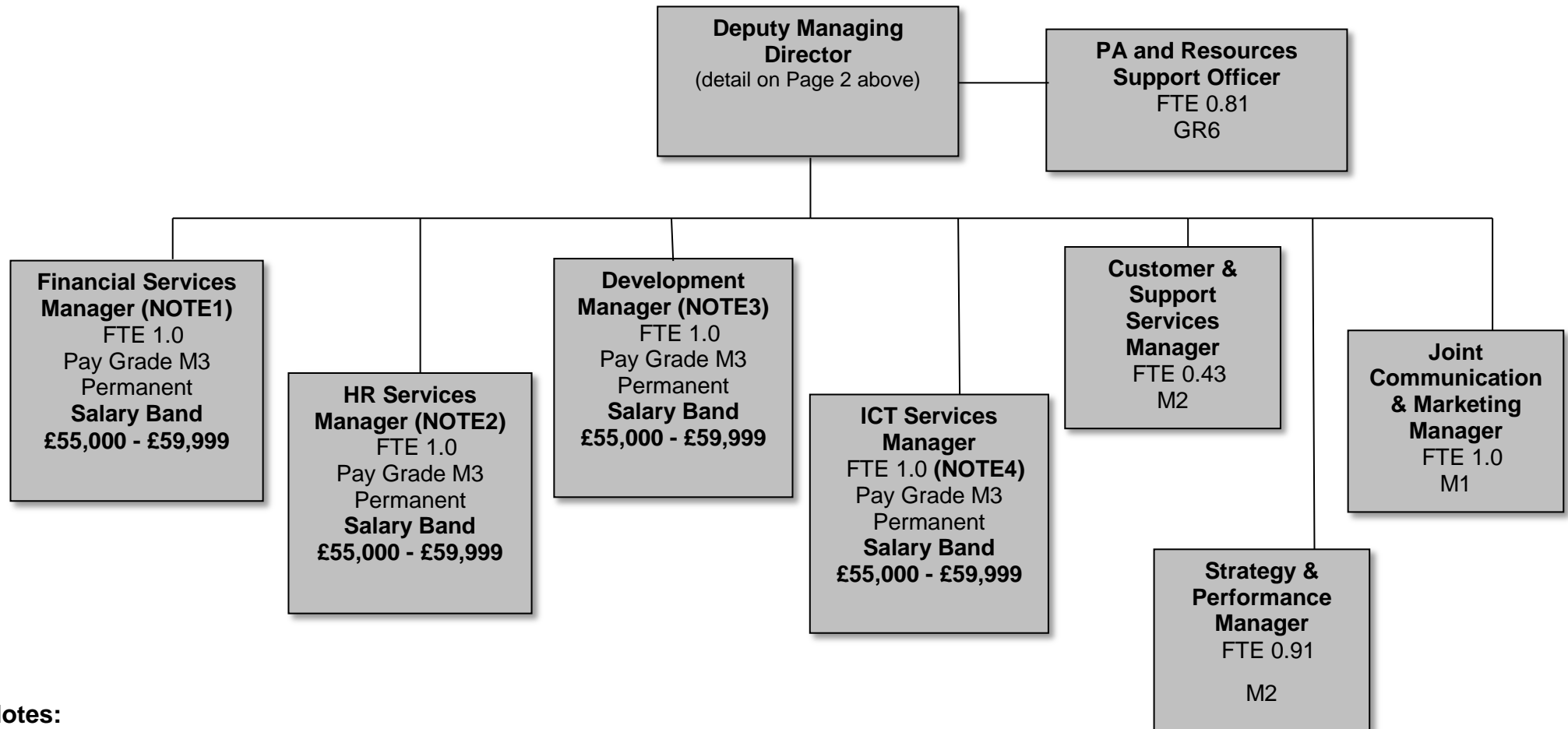
Pay Grade SMT2 (max pro
rata £86,139)

Permanent Contract

**Salary Band £80,000 -
£84,999**

** Joint post with Malvern Hills District Council

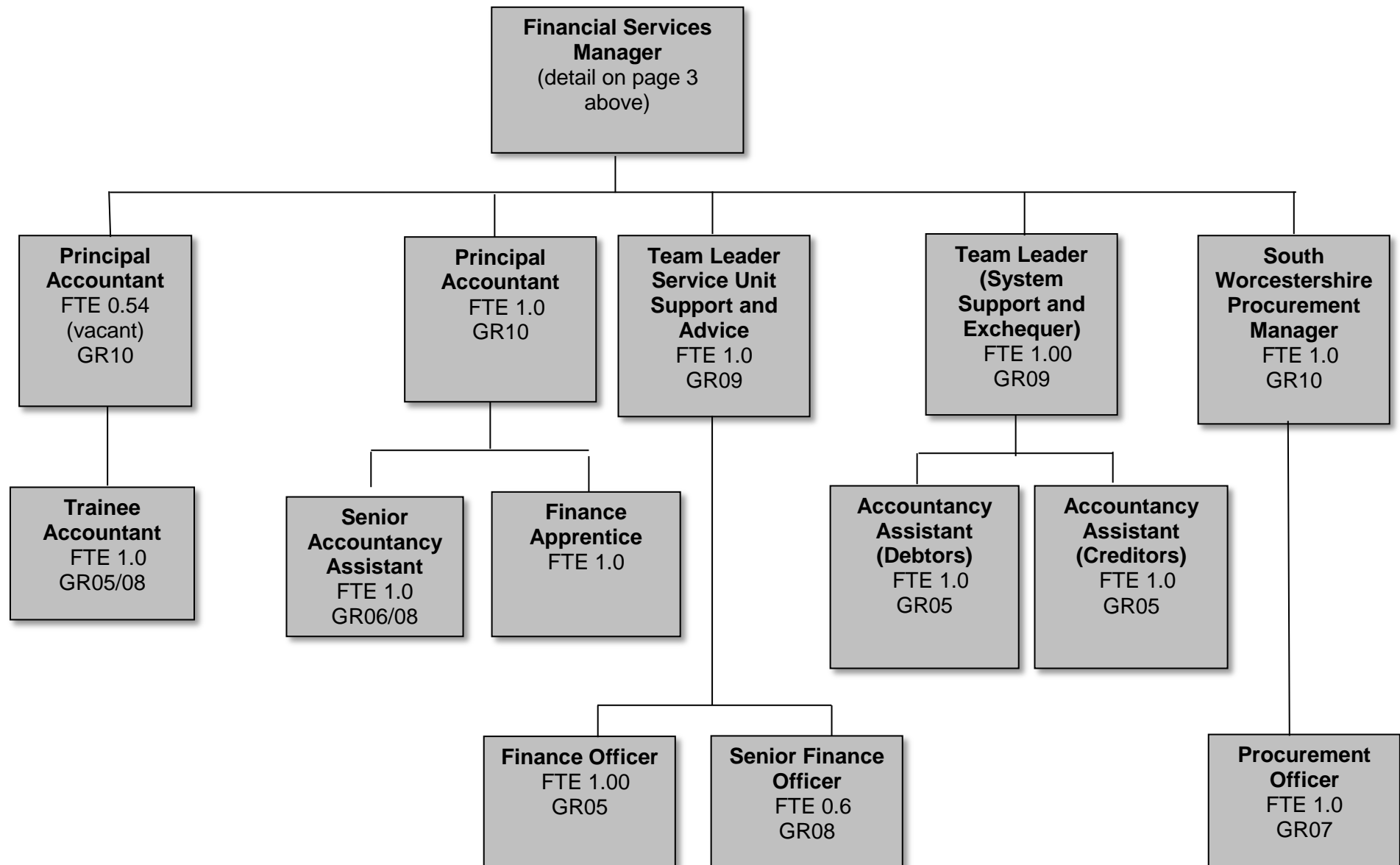
Strategy & Resources



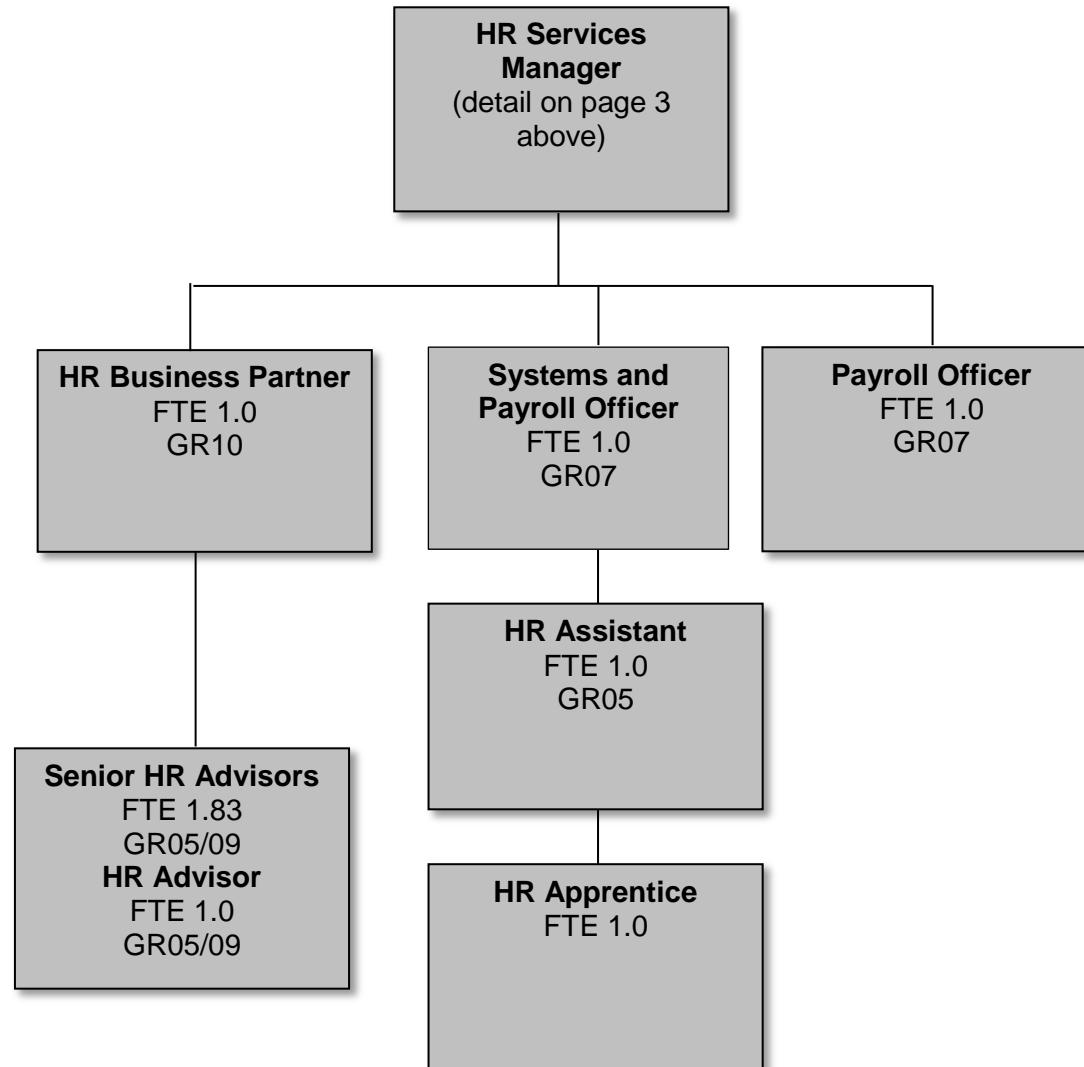
Notes:

1. Alice.mason@wychavon.gov.uk
2. Vickie.lee@wychavon.gov.uk
3. Tim.deakin@wychavon.gov.uk
4. Nigel.winters@wychavon.gov.uk

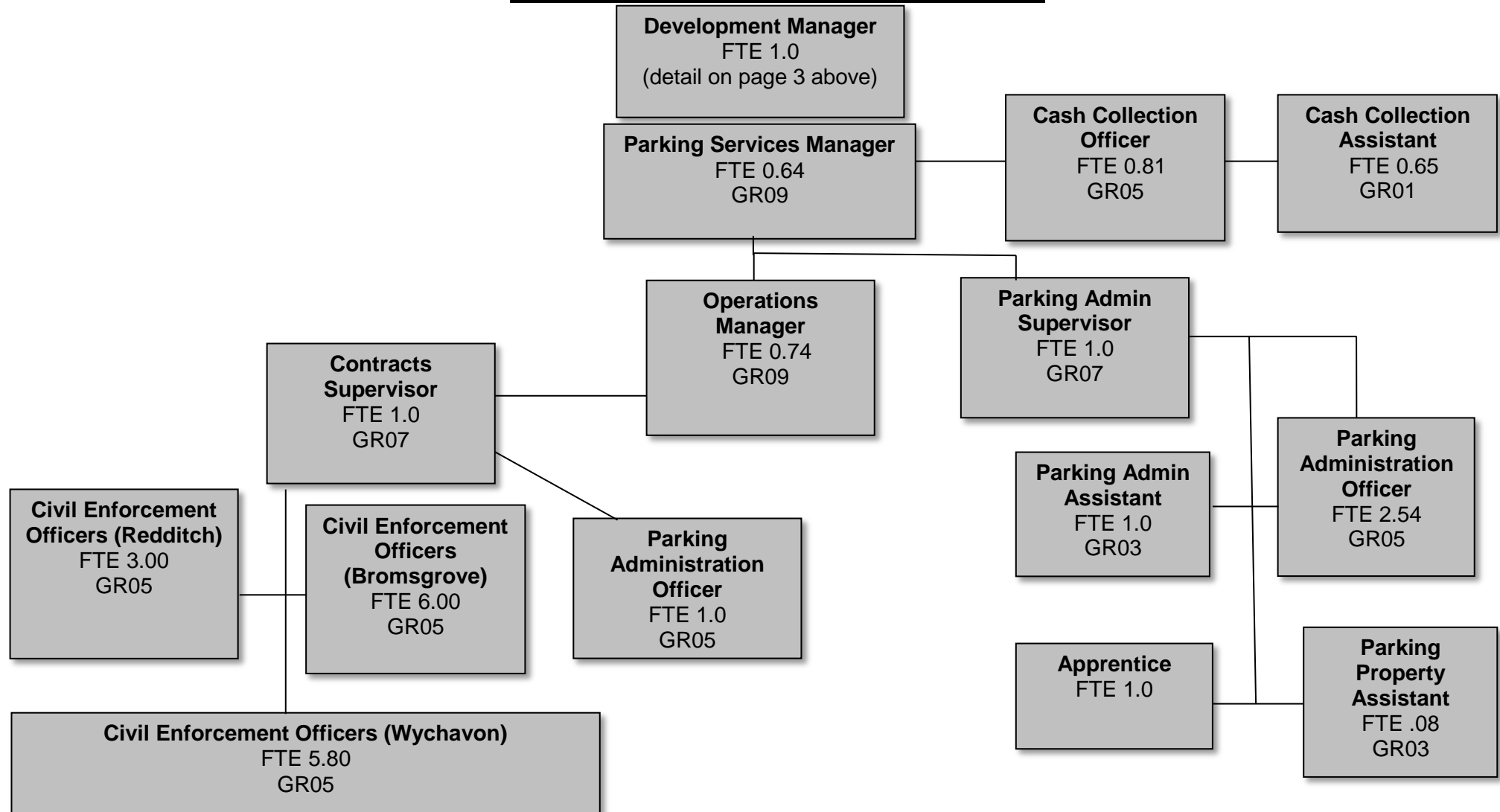
Strategy & Resources – Financial Services



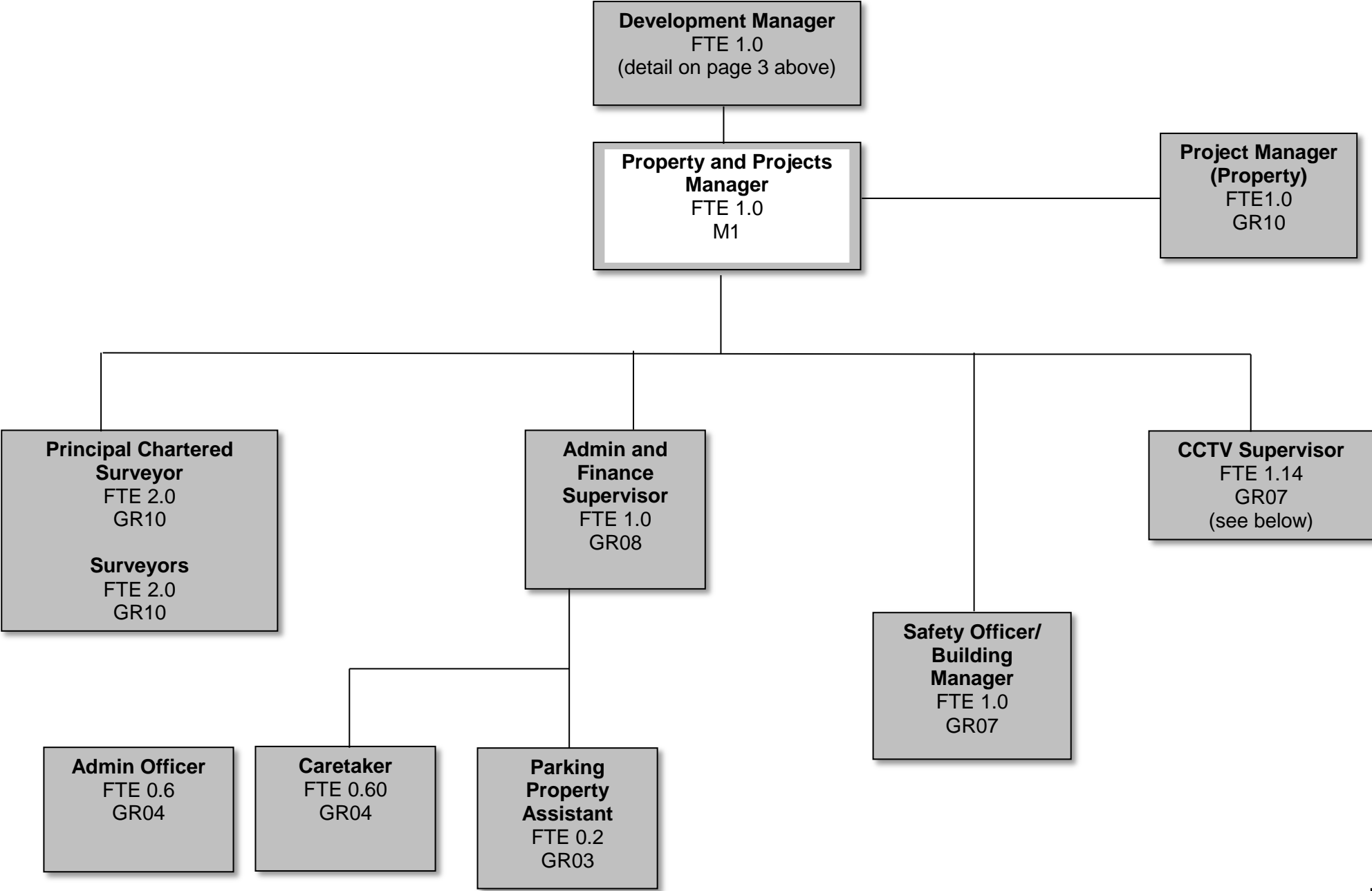
Strategy & Resources – Human Resources



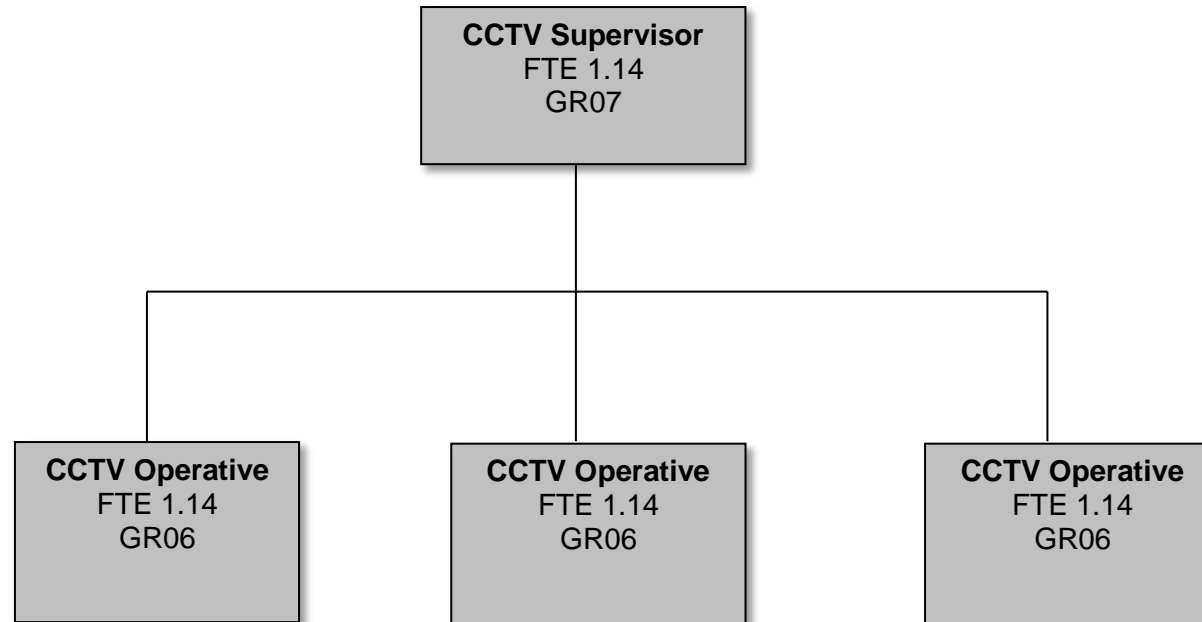
Strategy & Resources –
Corporate Projects - Parking Services



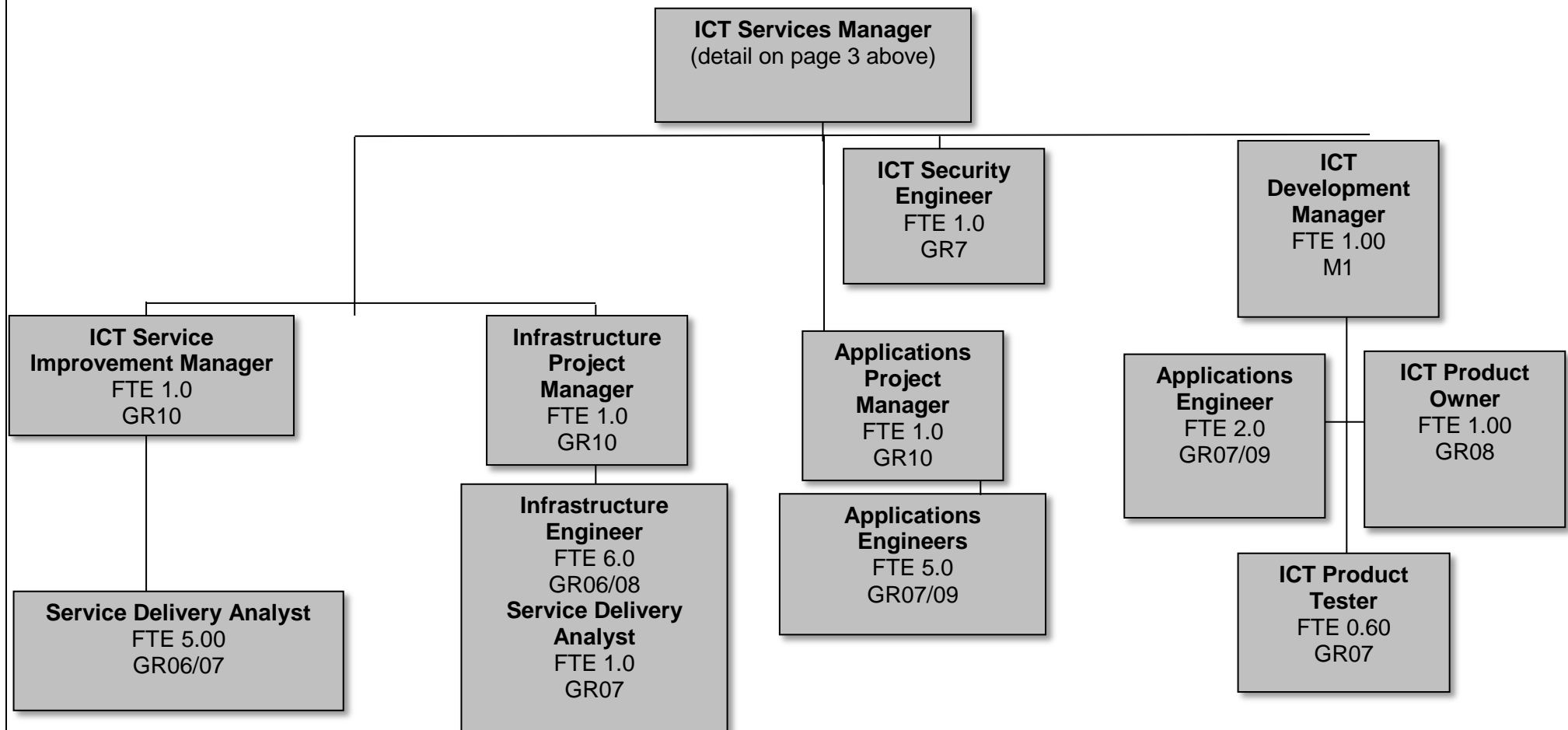
Strategy Resources –
Corporate Projects - Property



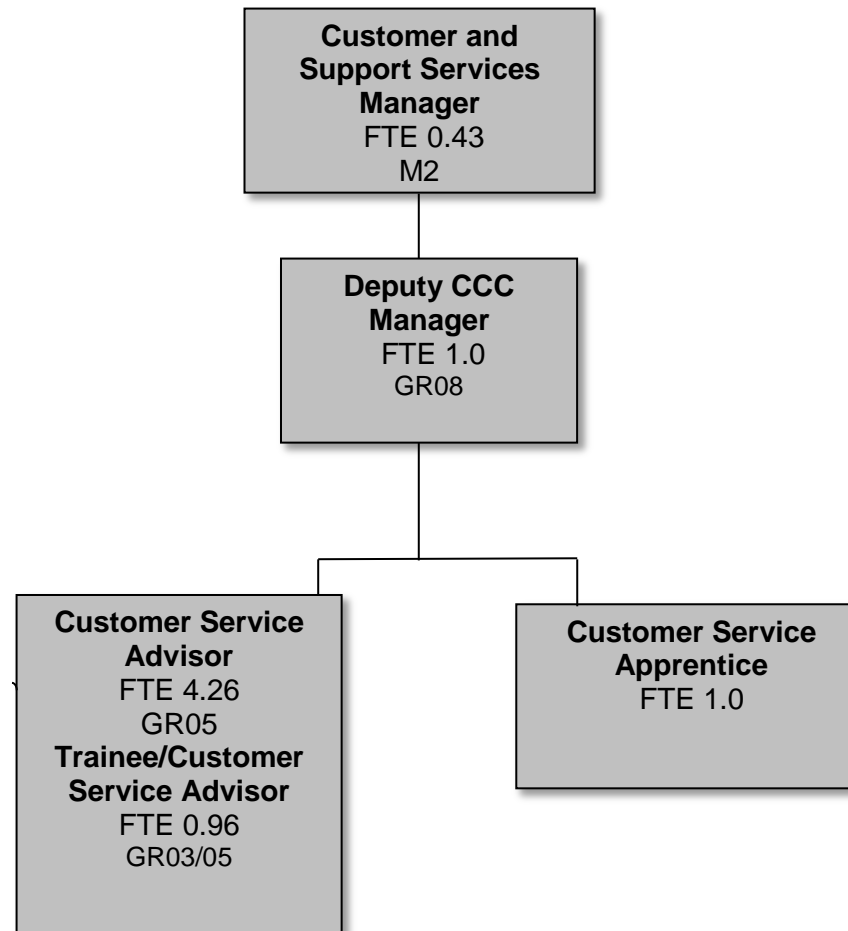
Strategy & Resources –
Corporate Projects – Property (CCTV)



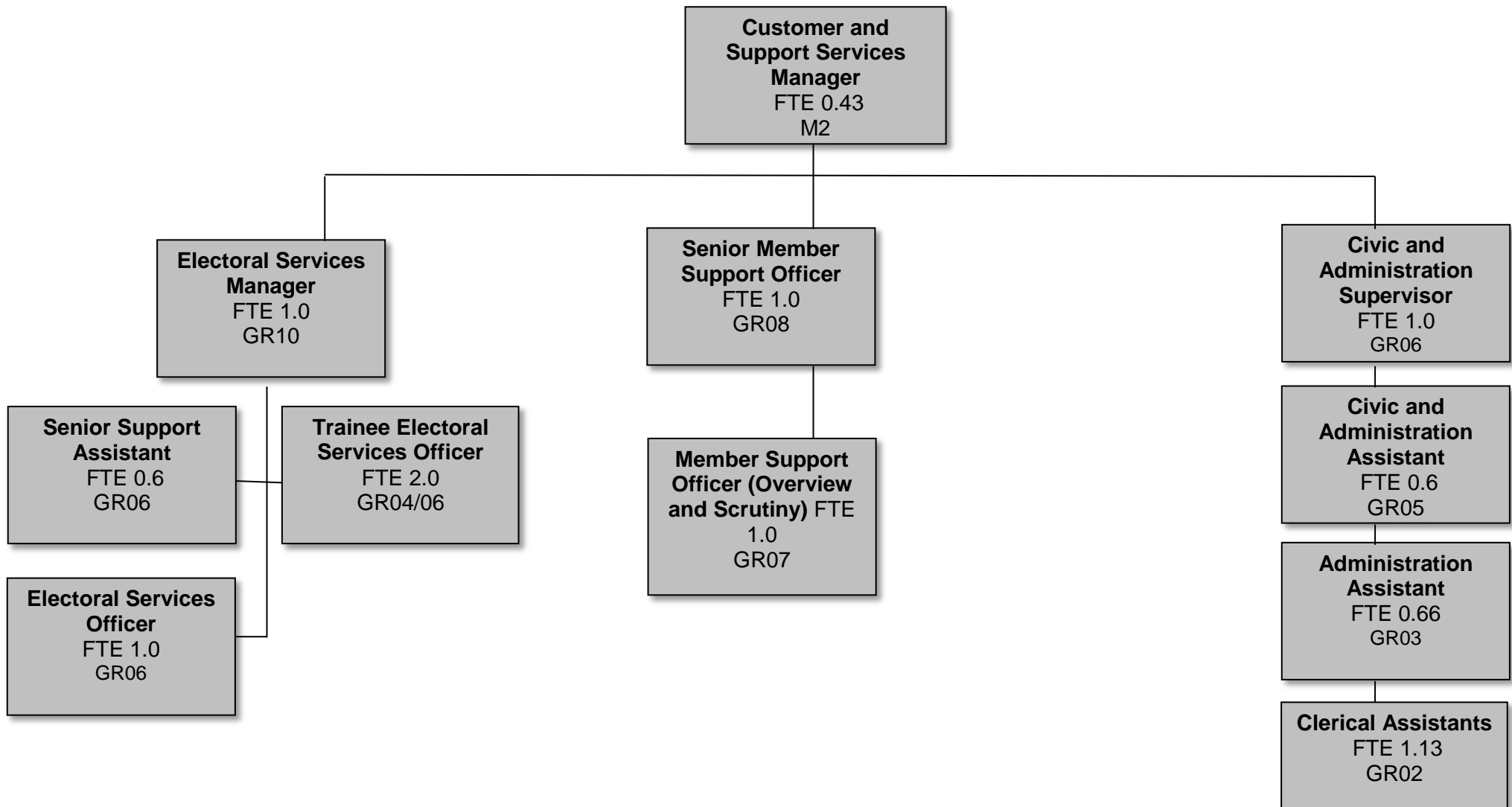
Strategy & Resources – ICT Shared Service



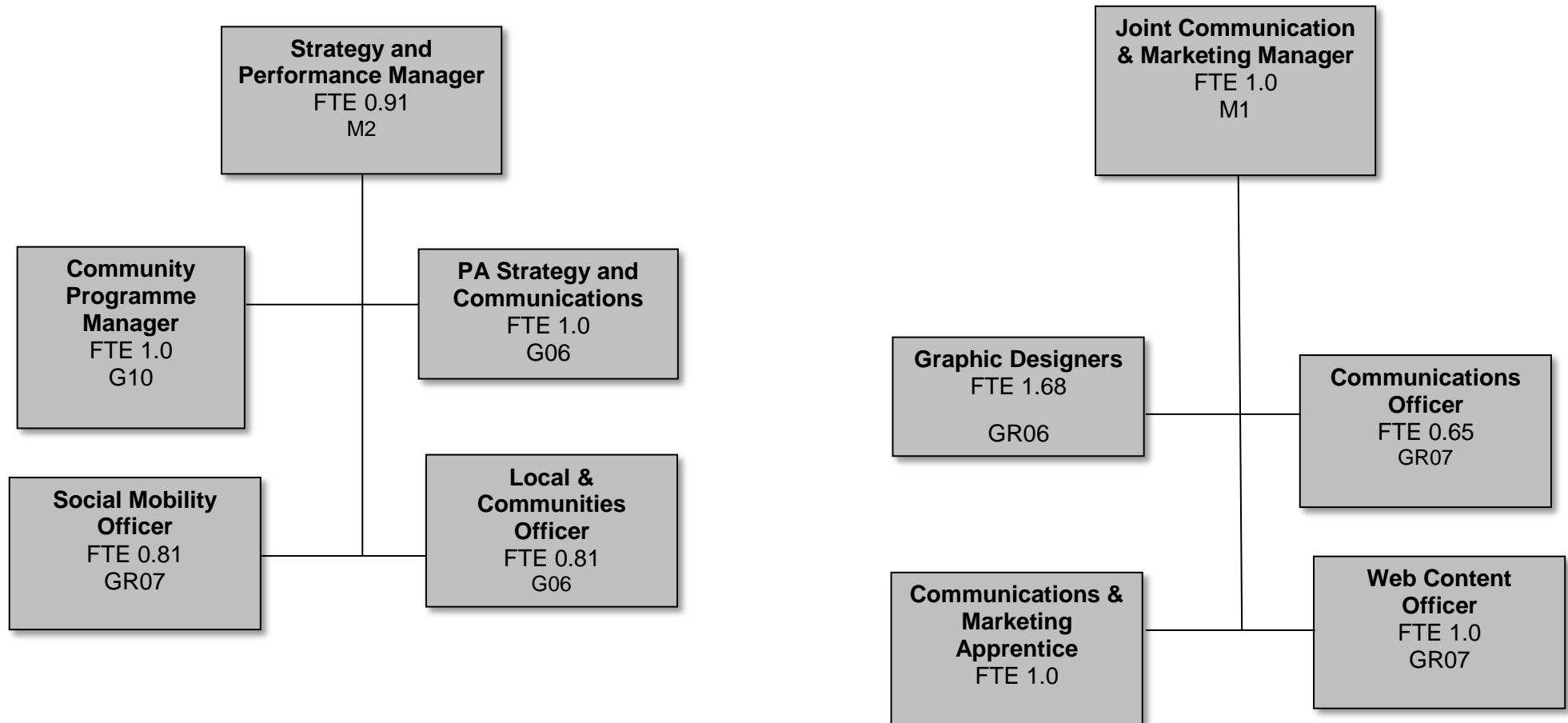
Strategy & Resources – Customer and Support Services



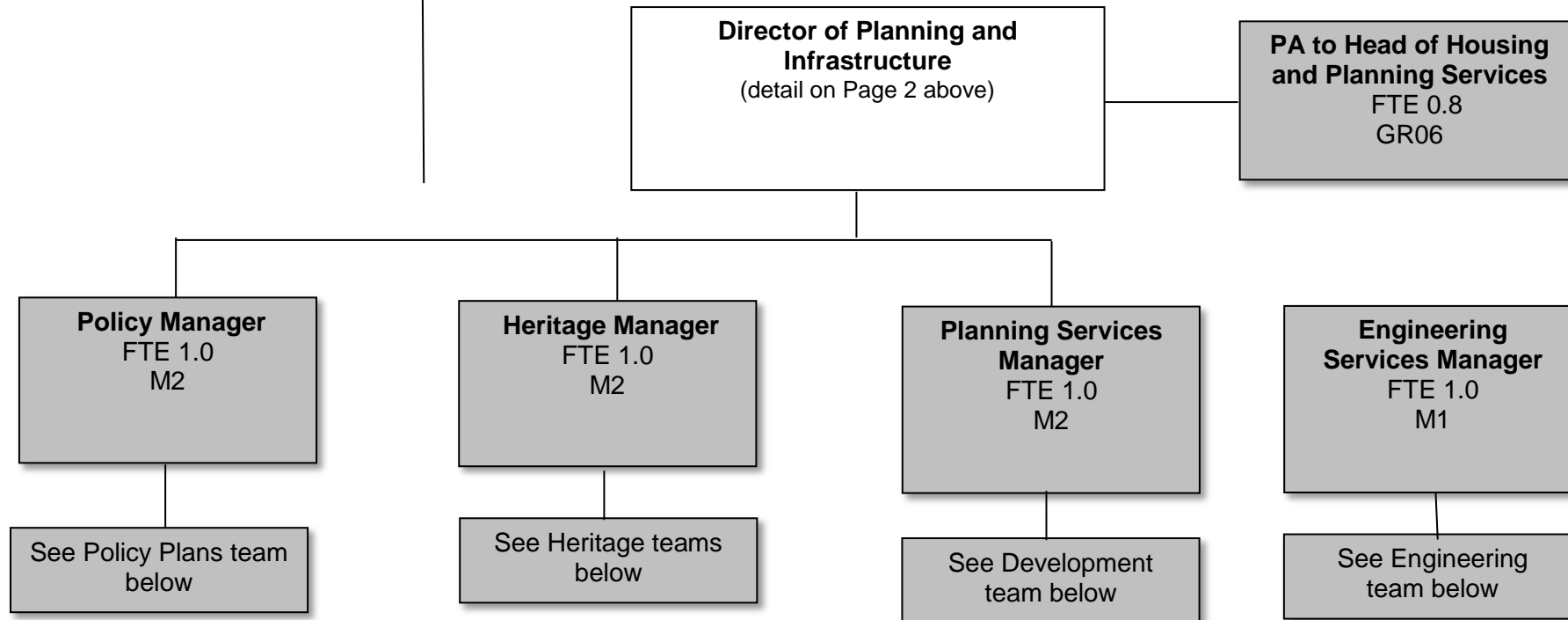
Strategy & Resources – Electoral Services and Support Services



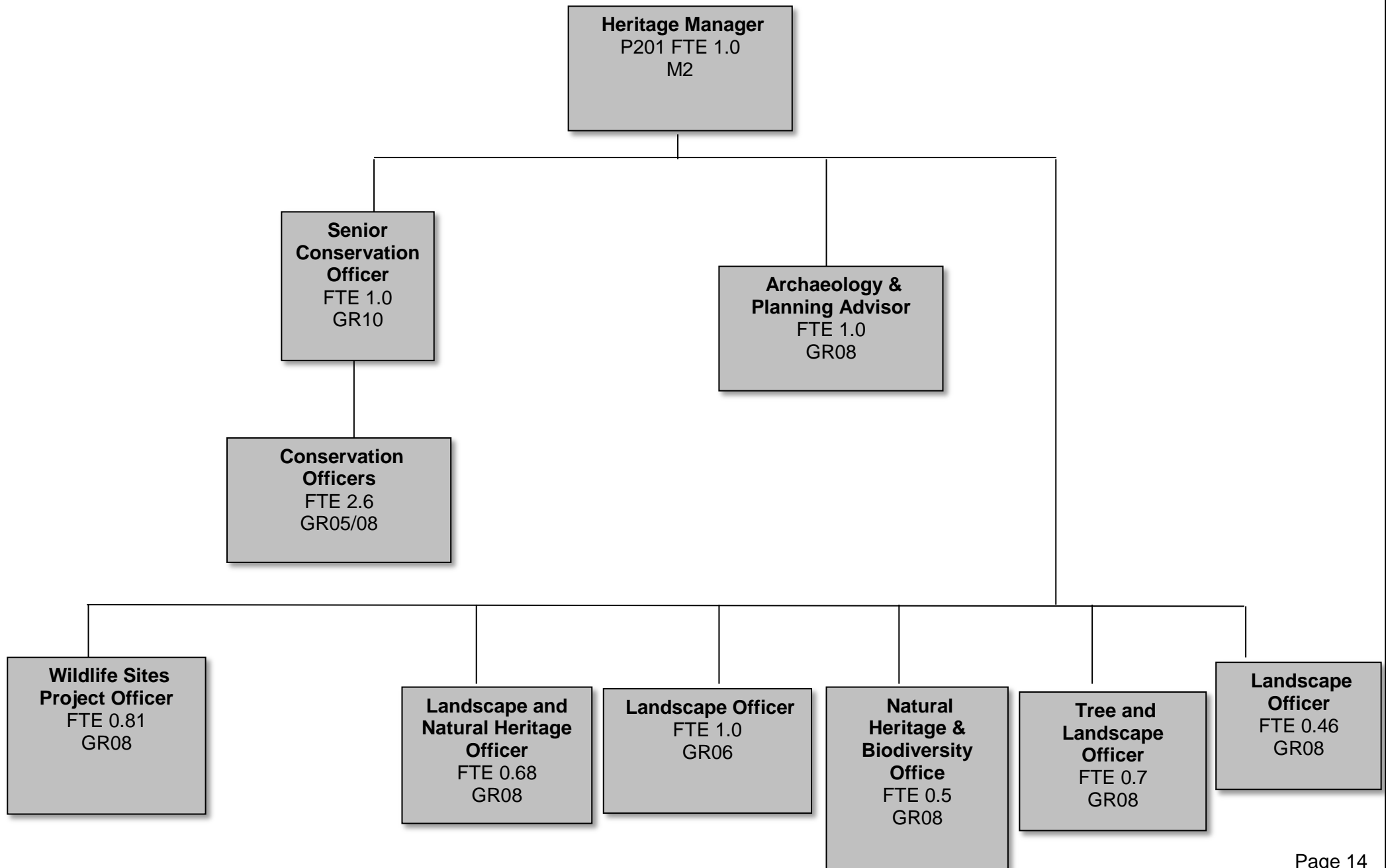
Strategy & Resources – Strategy & Performance and Communications and Marketing



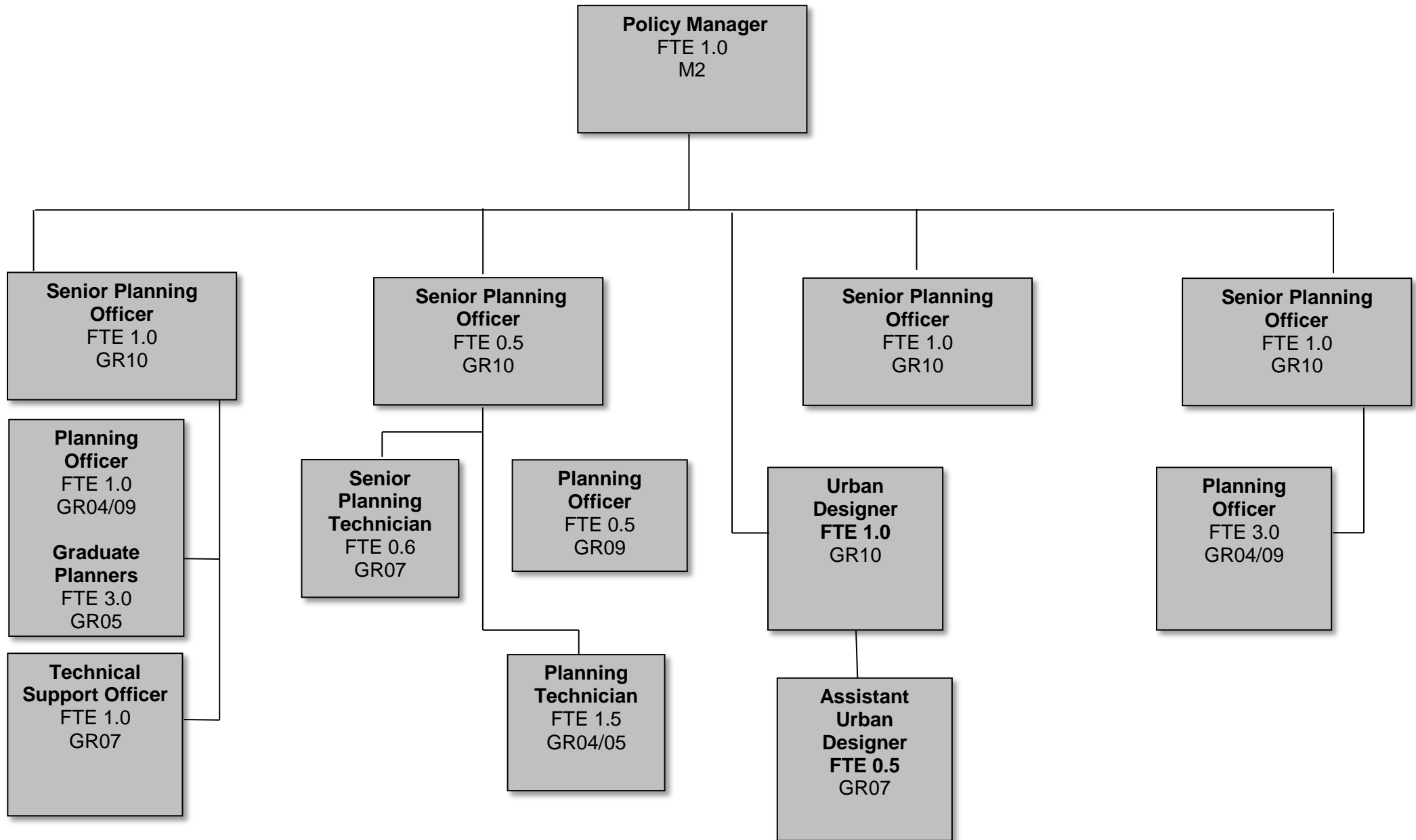
Planning and Infrastructure



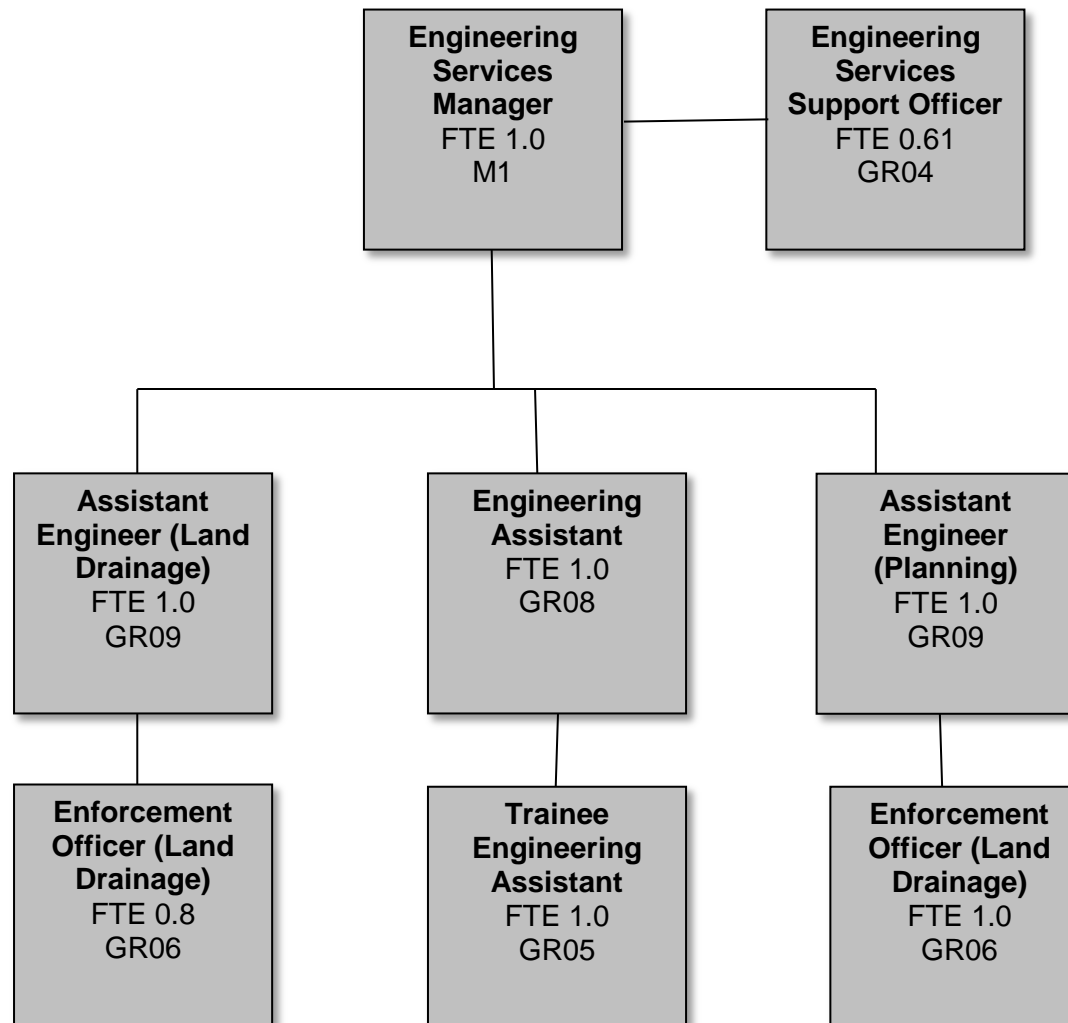
Planning & Infrastructure – Heritage



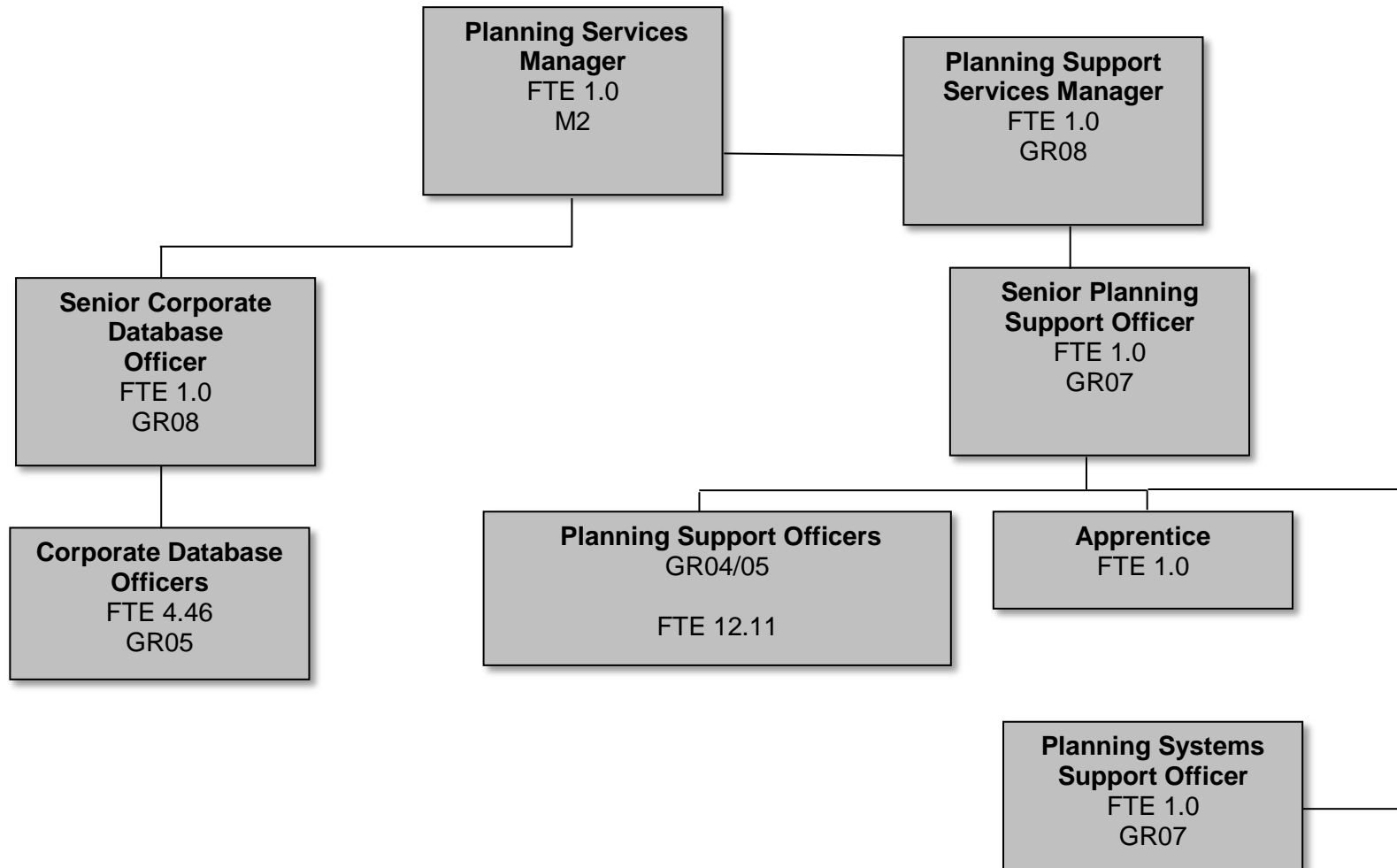
Planning and Infrastructure – Policy Plans



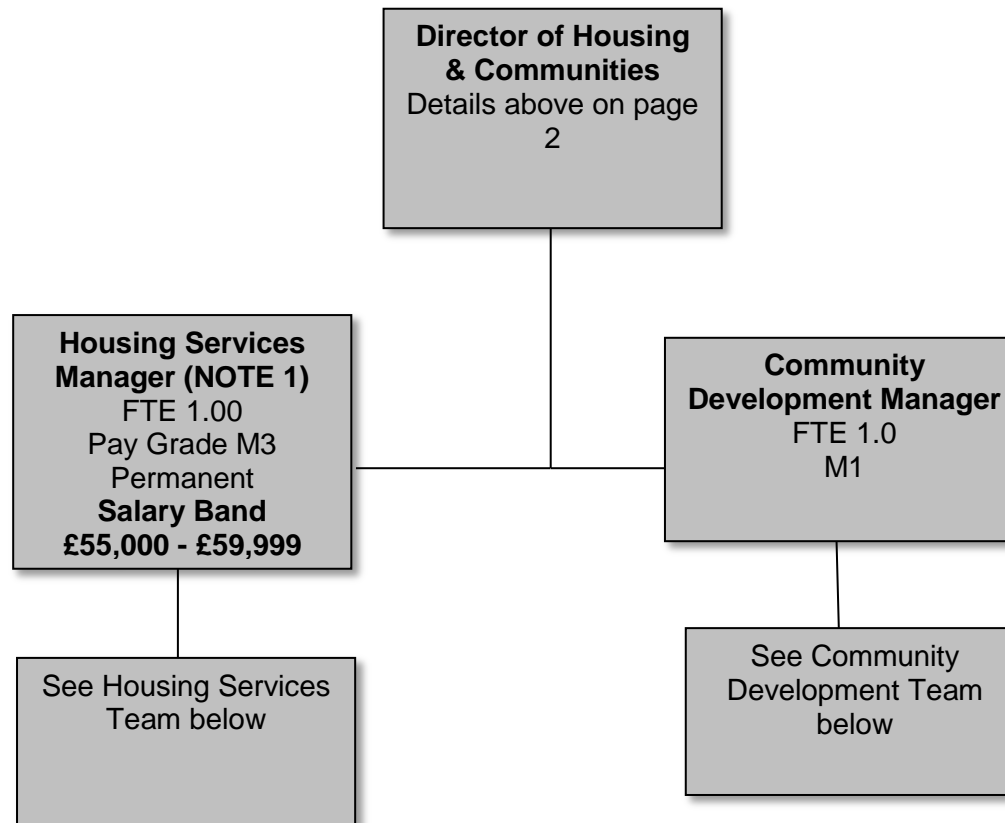
Planning and Infrastructure – Engineers



Planning and Infrastructure – Corporate Databases and Support Services



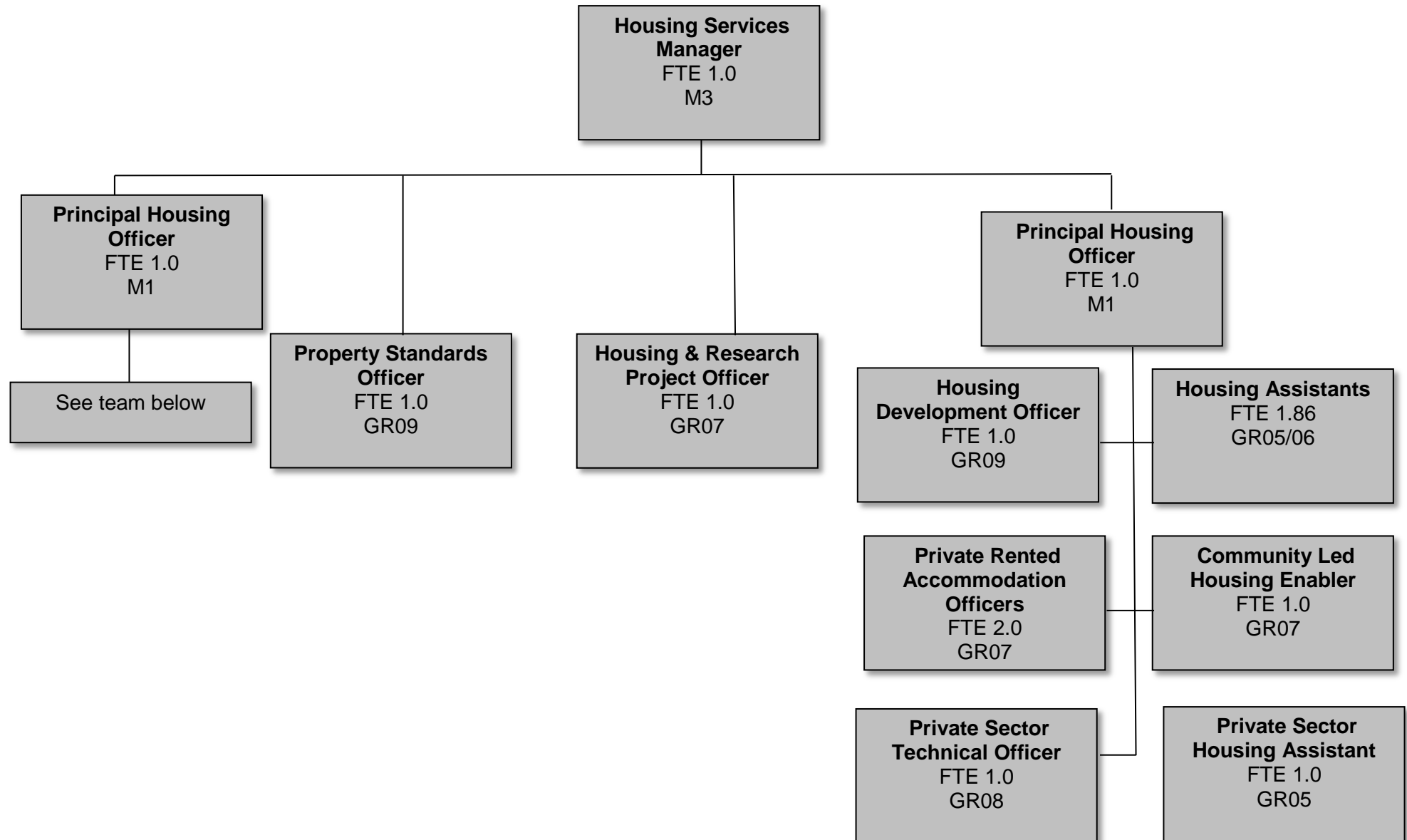
Housing & Communities



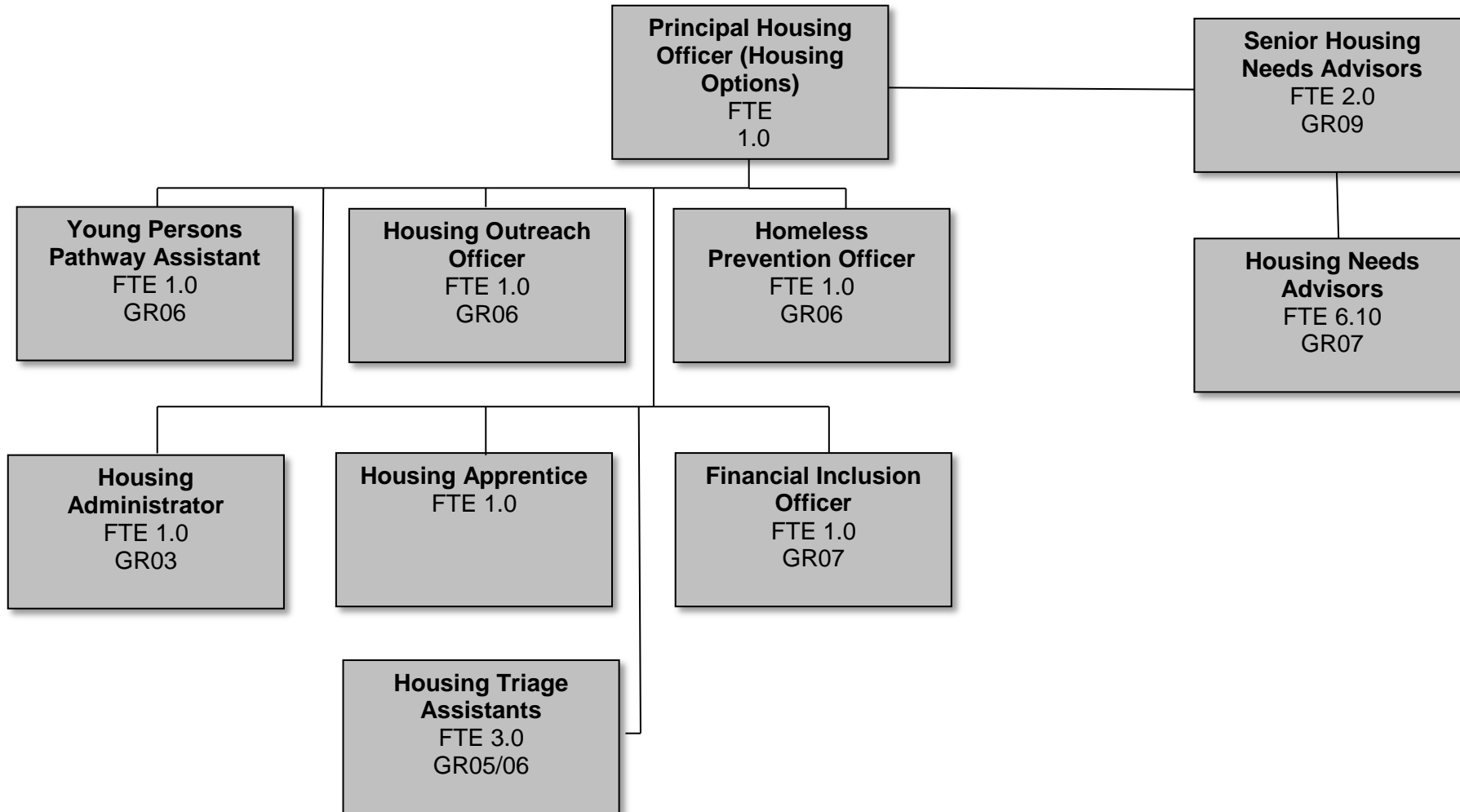
Notes:

1. Elaine.salter@wychavon.gov.uk

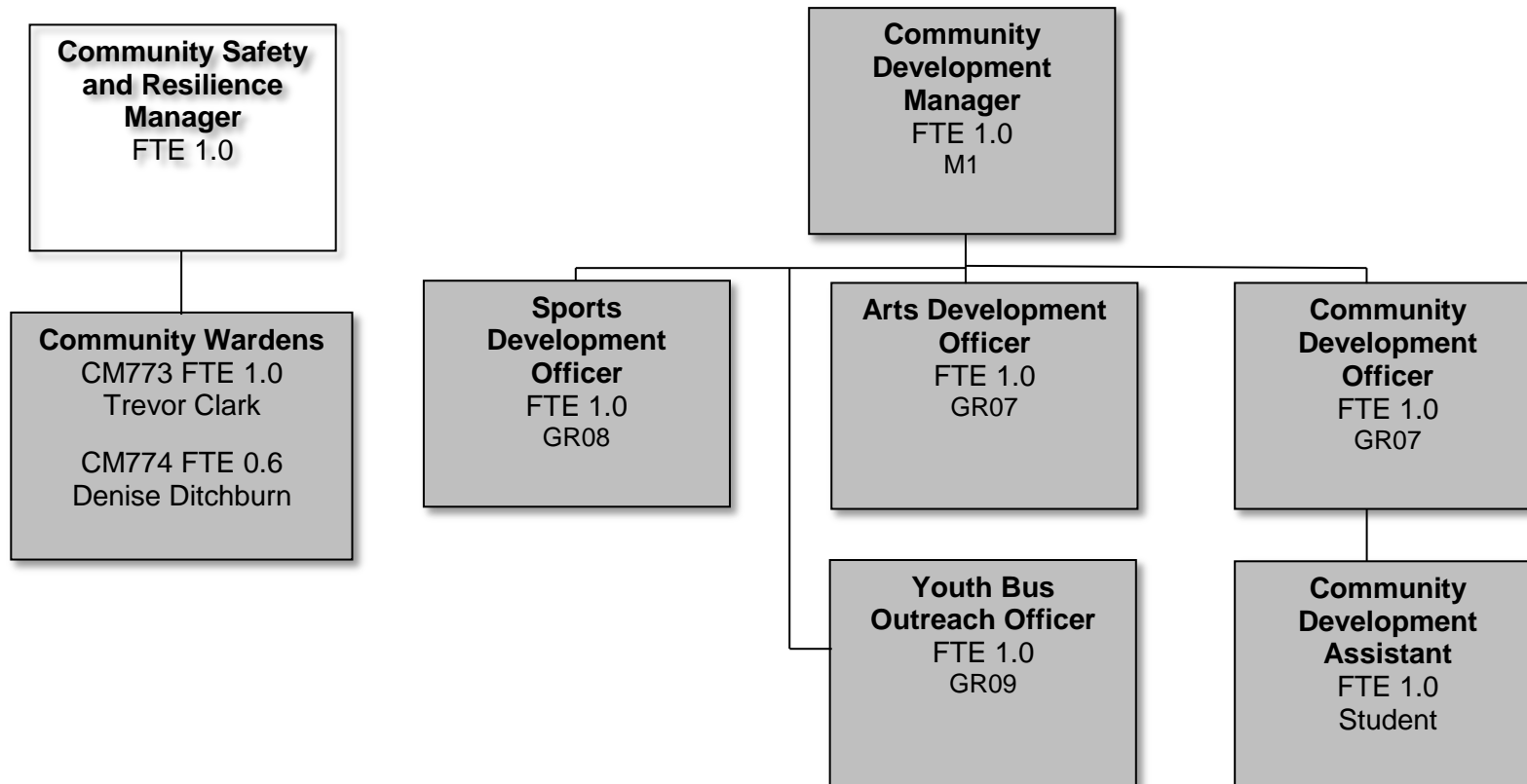
Housing & Communities - Housing Team



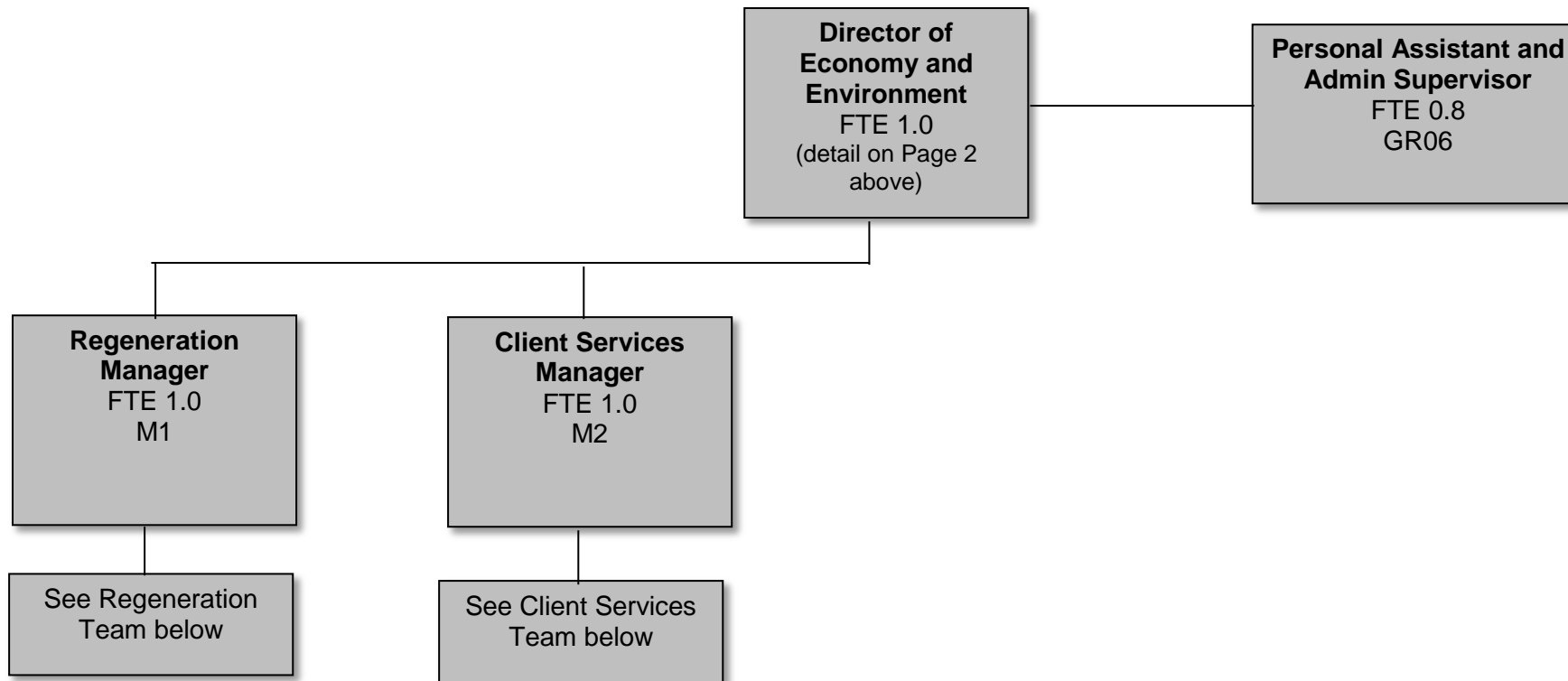
Housing & Communities – Housing Team



Housing & Communities – Community Development & Community Safety

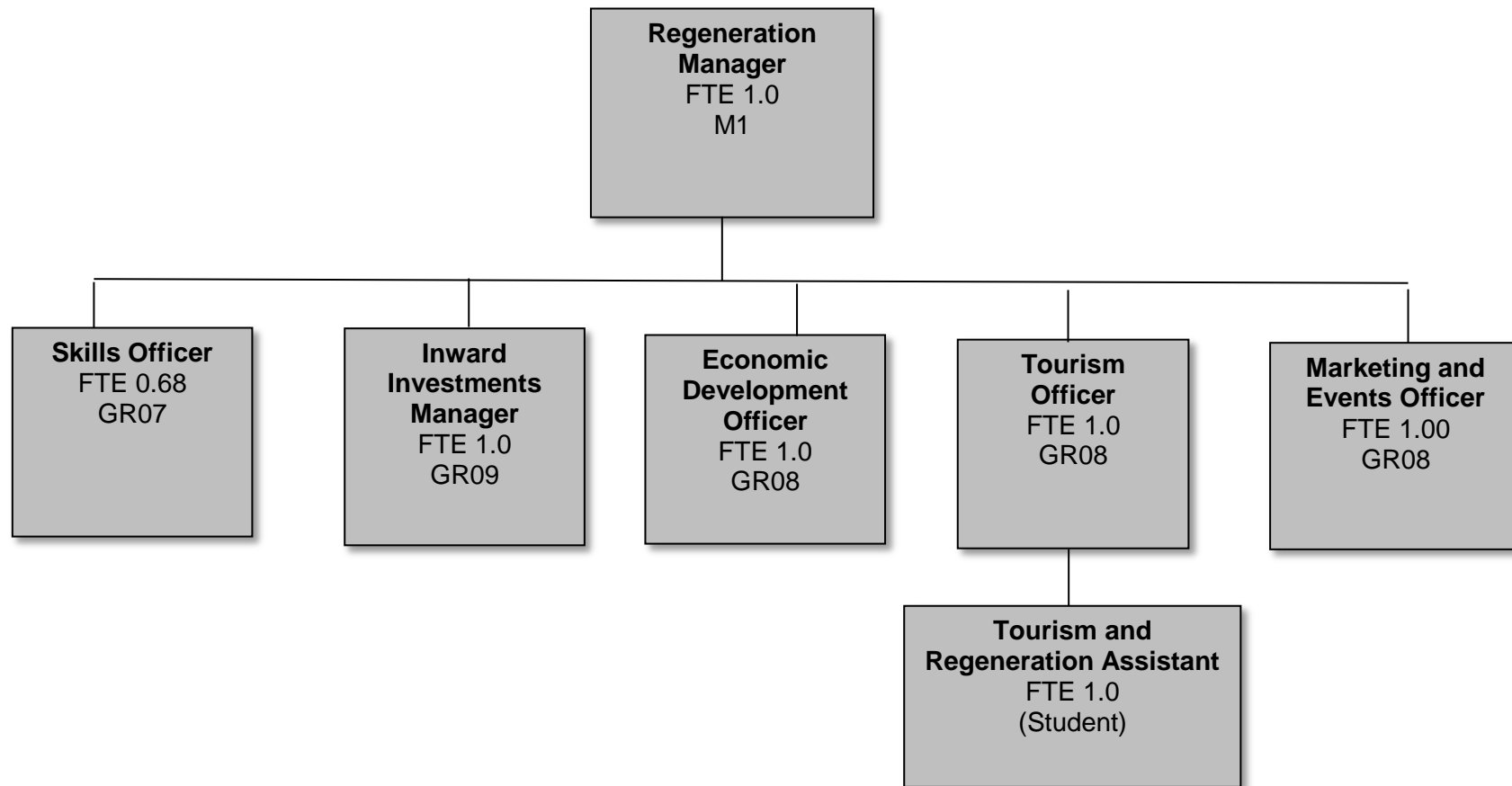


Economy & Environment



Economy & Environment

Regeneration



Economy & Environment
- Client Services

